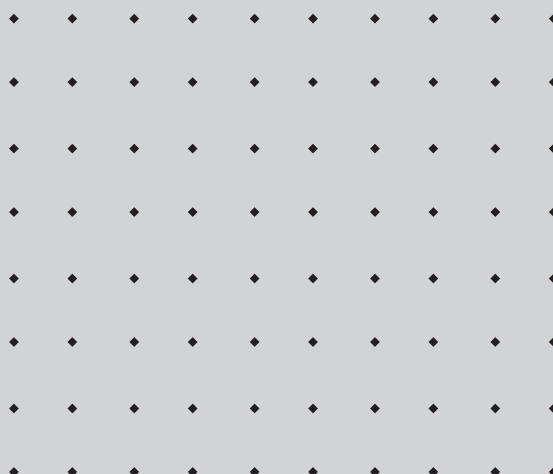


CZ Service Manuals

RiD03710

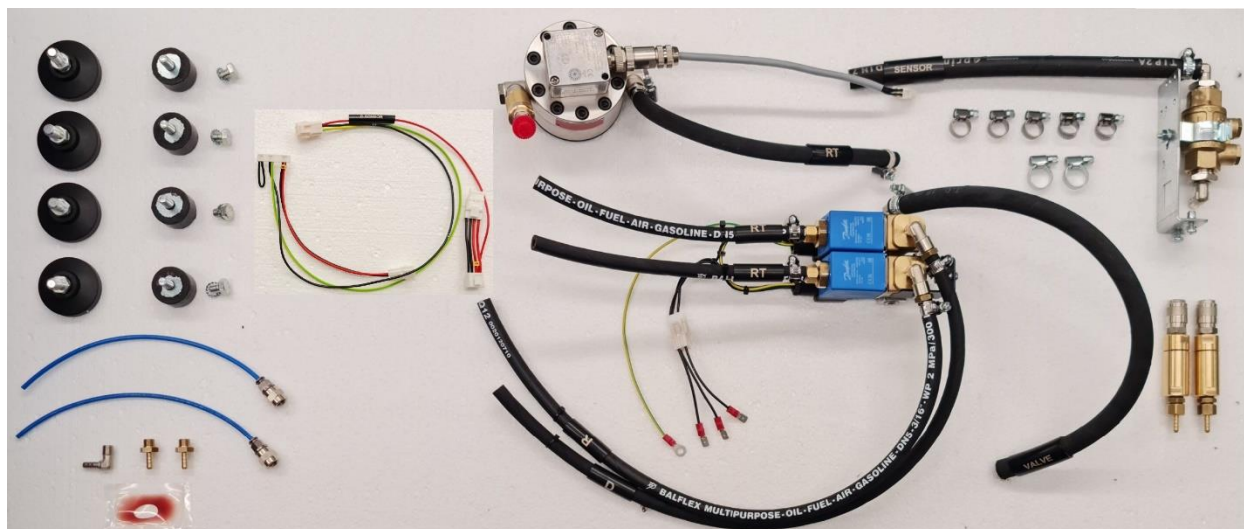
Upgarde Kit DS1R-D to DS1R_X





RiD03710

Upgrade Kit DS1R-D to DS1R_X



Calibration data change procedure:

1. Log in as service. (Username: service – Password: 12345)
2. Go to the three dots (top right on the screen) and select “Settings”
3. From the left list select “Machine”
4. In the machine tab select “KEM-D Sensor Calibration K-Factor” you found on the sticker new sensor
5. Open the TeamViewer QS send us the ID via email support@carbonzapp.com to change the program for working new sensor measure.
6. Tools Needed: Allen Key # 2. Allen Key # 2.5. Phillips Screwdriver.

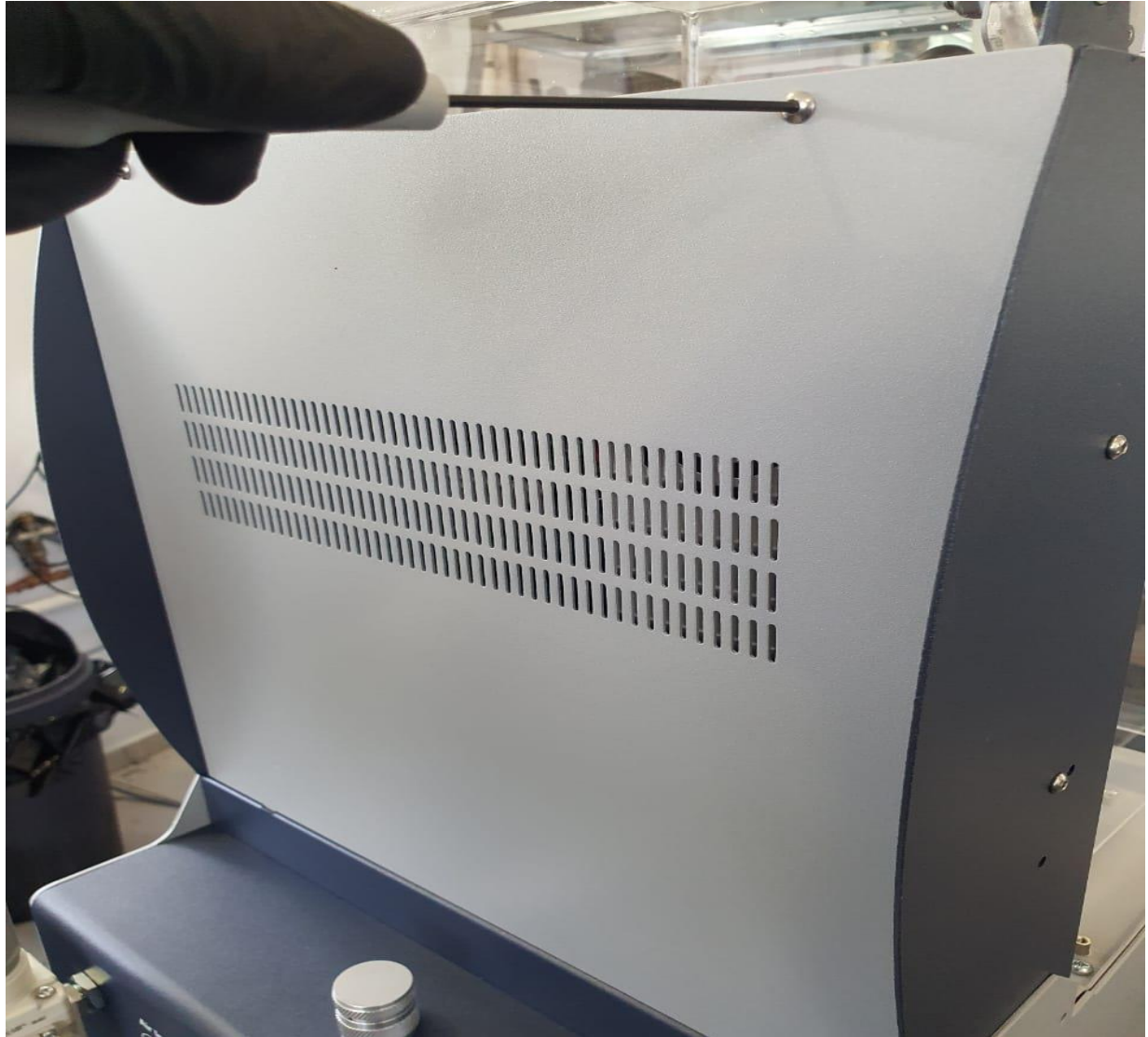
!!WARNING!!Before you start the following procedure unplug AC power supply!

STEP.1 Power OFF

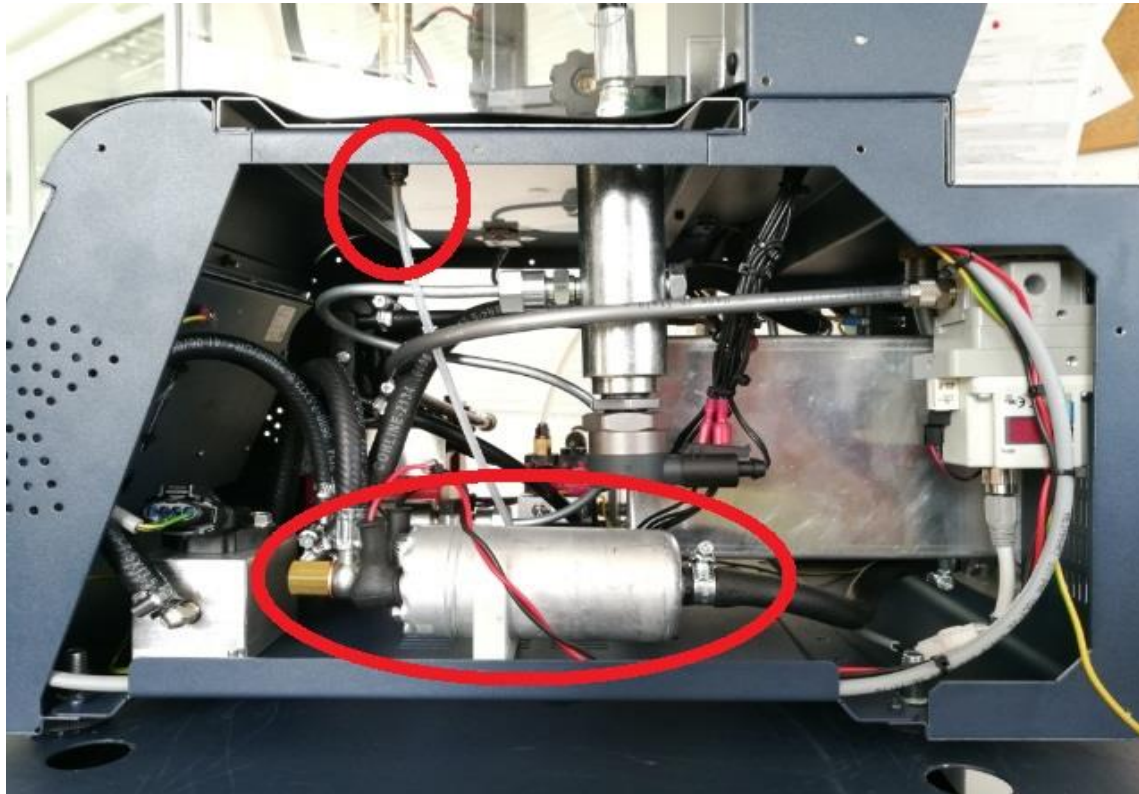


STEP.2 Remove the Left and Right and back panel.

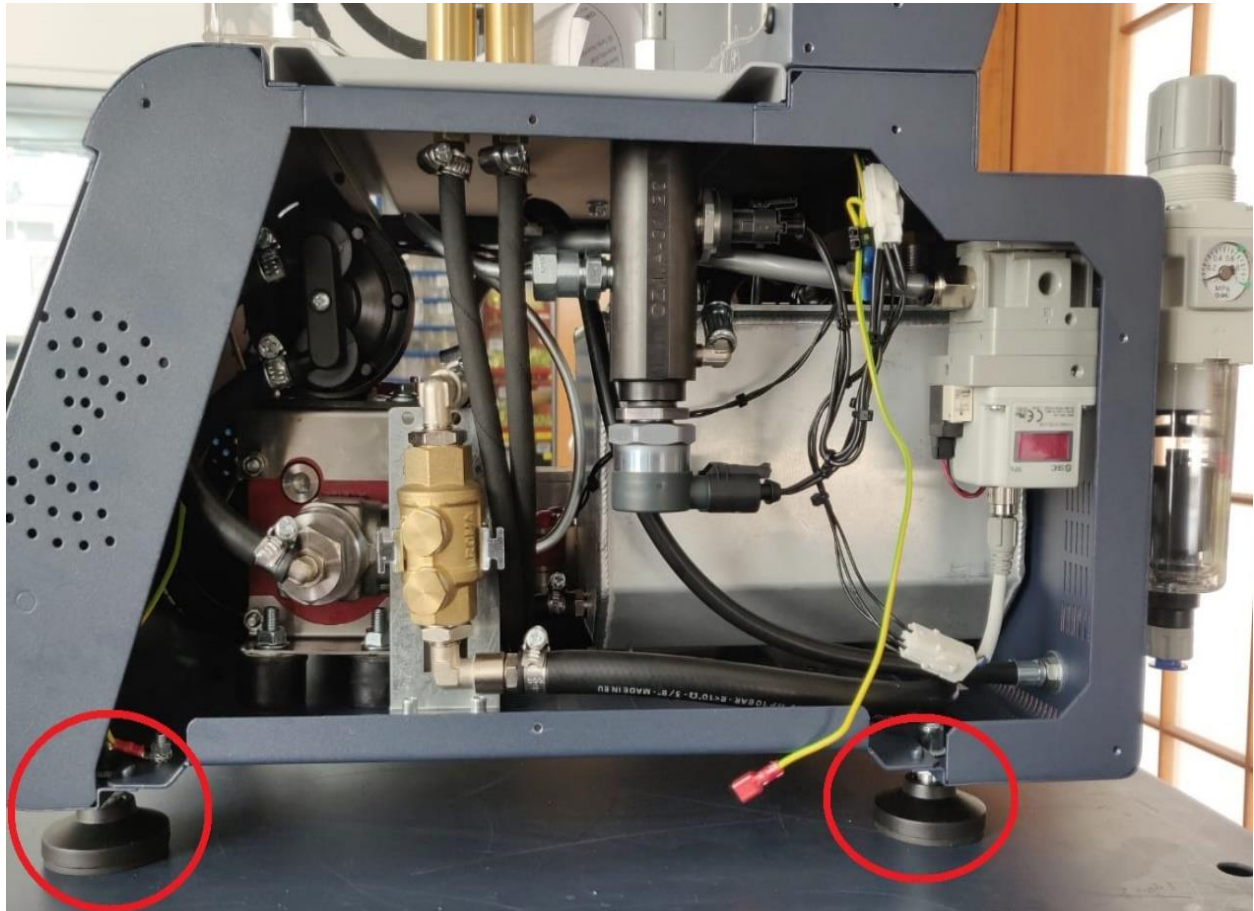


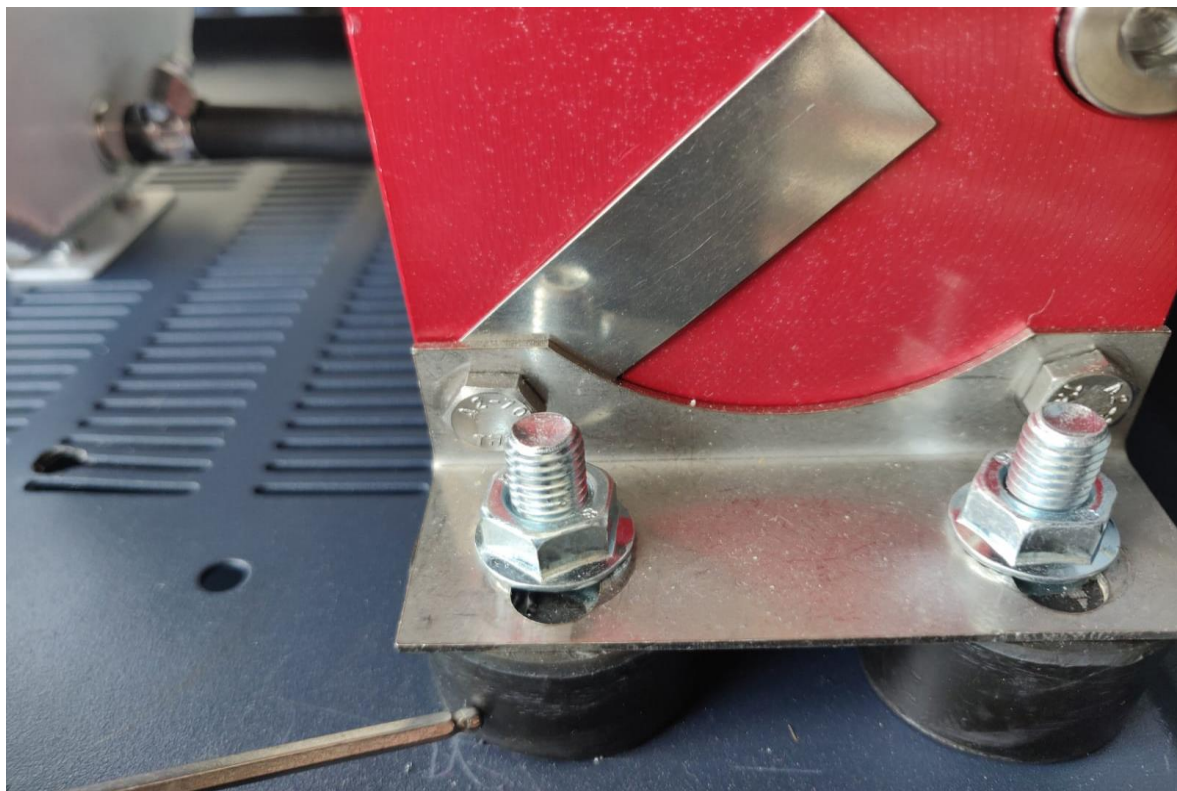


STEP.3 Remove the old parts you see on the RED cycles.

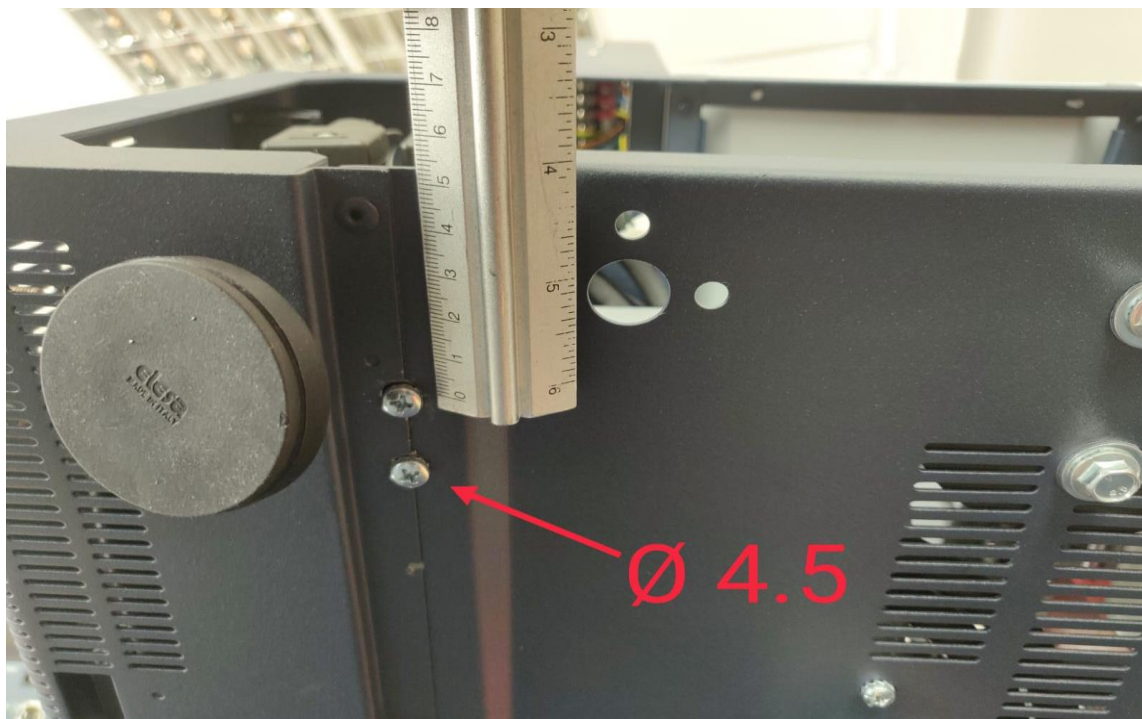
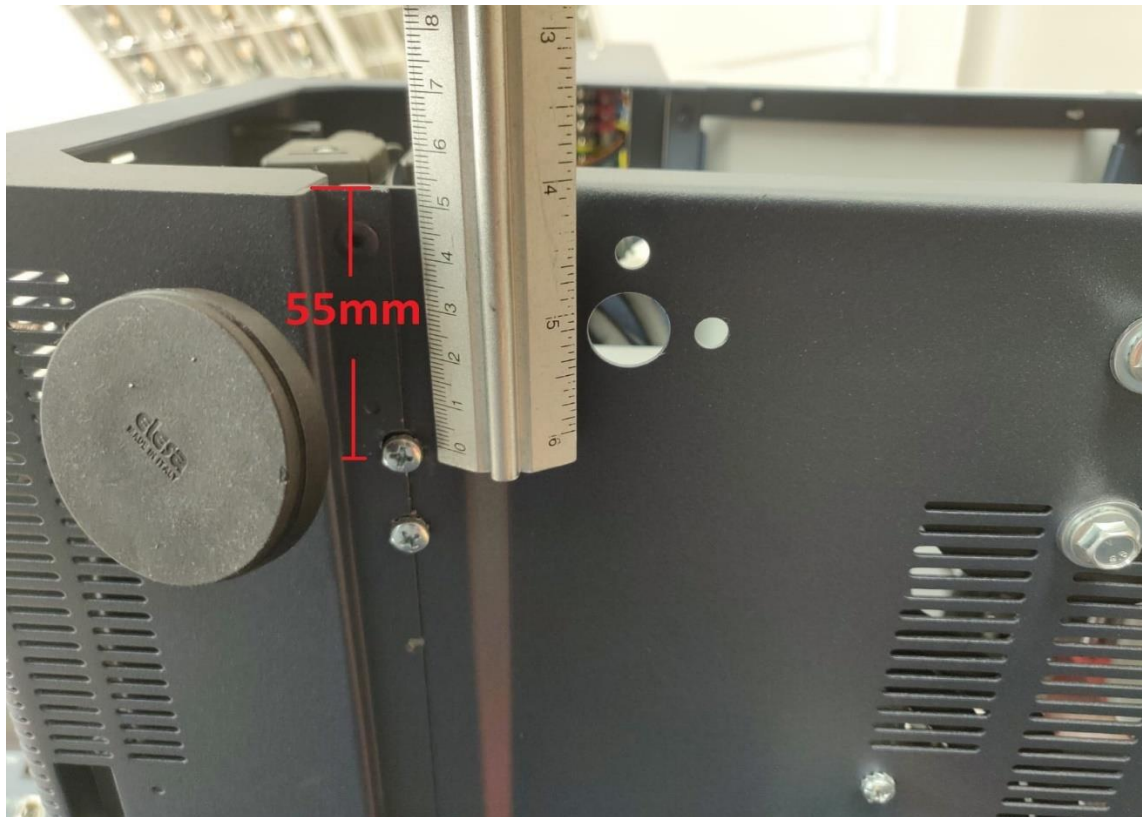


STEP.4 Connect the new stands to down of machine and the pump.



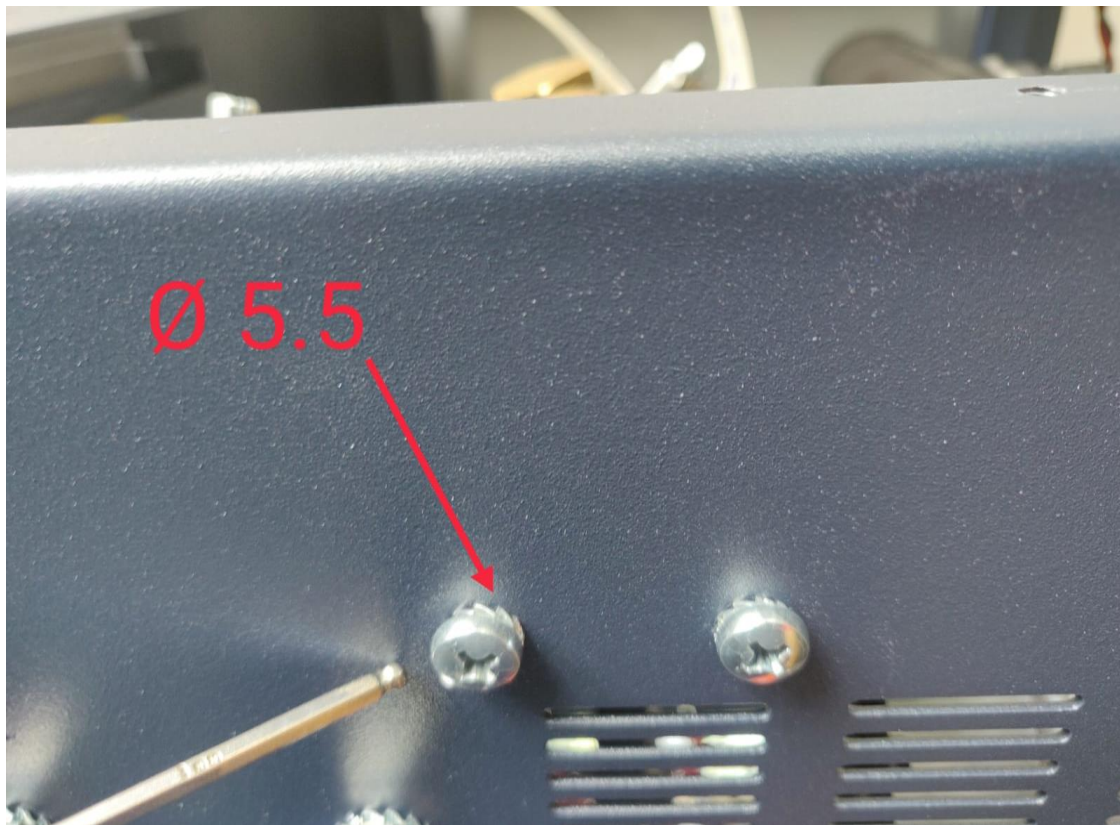
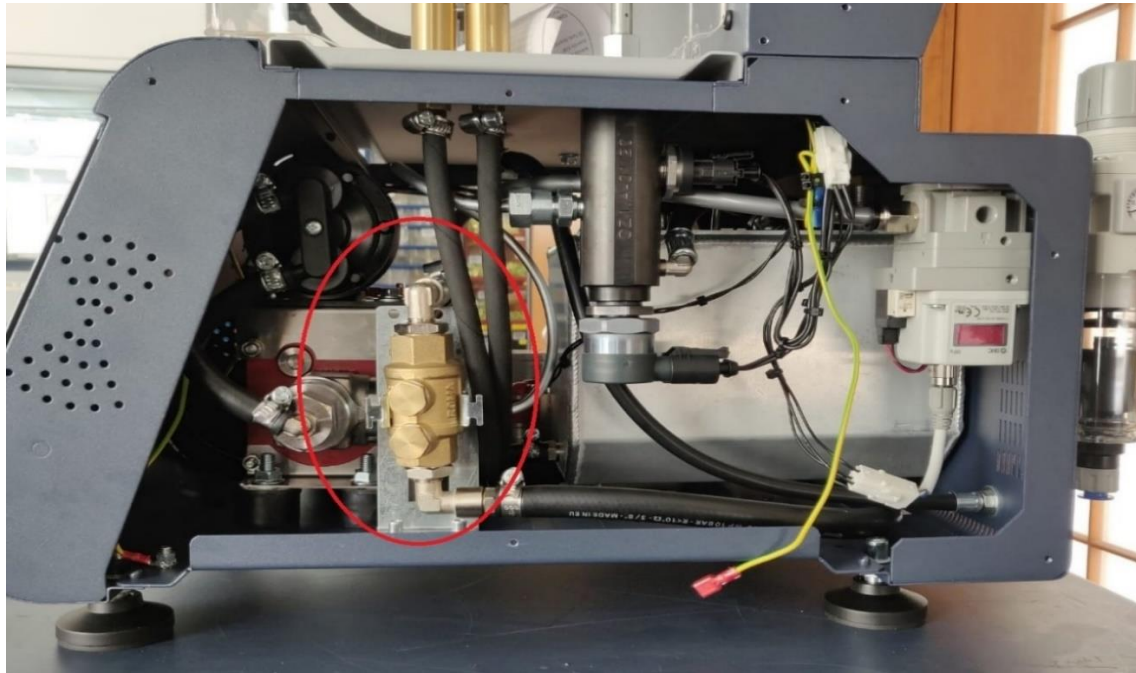


STEP.5 Make two holes to install the new blue valve.

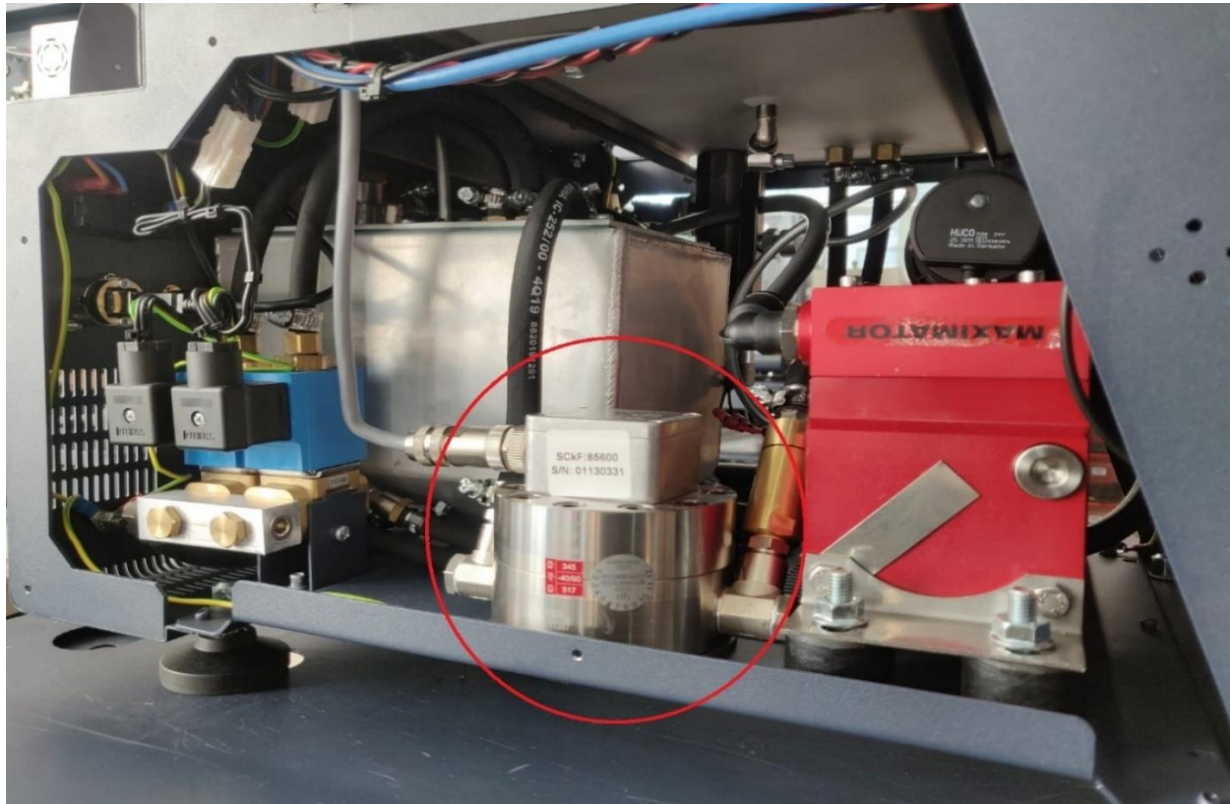


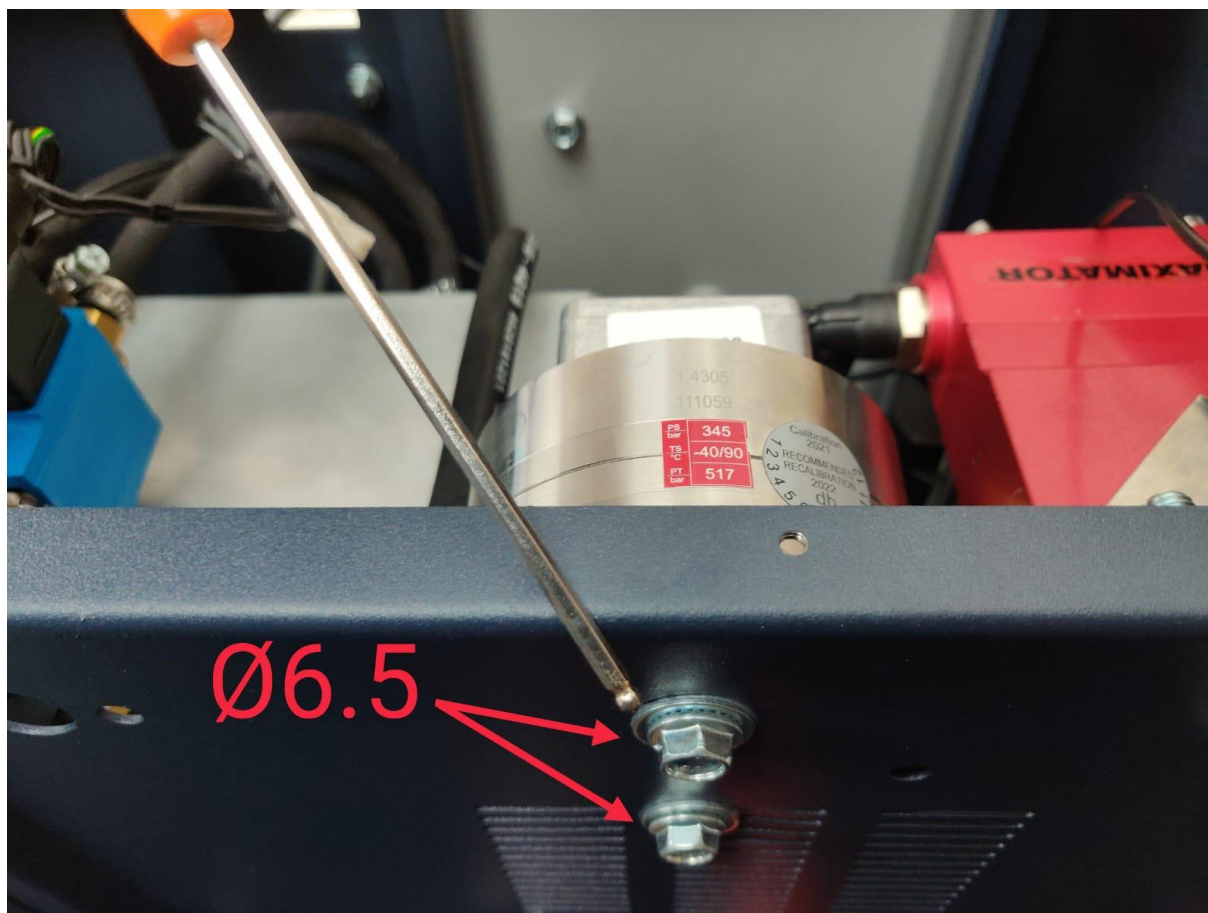


STEP.6 Make two holes to install the valve.

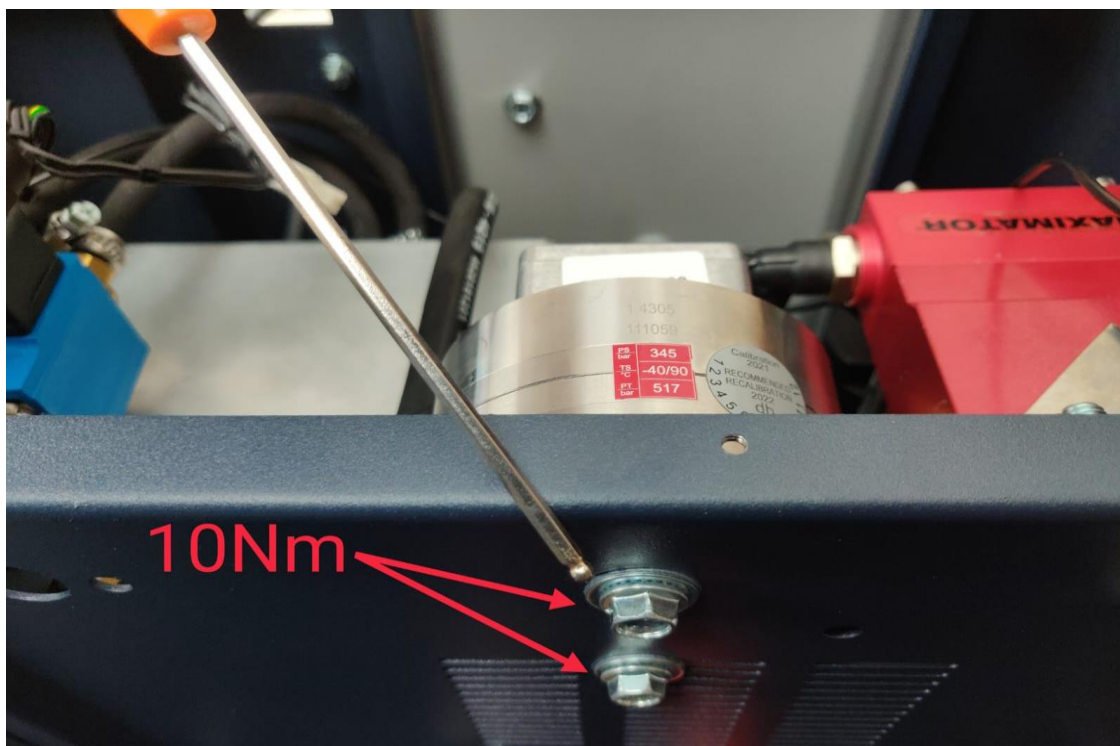
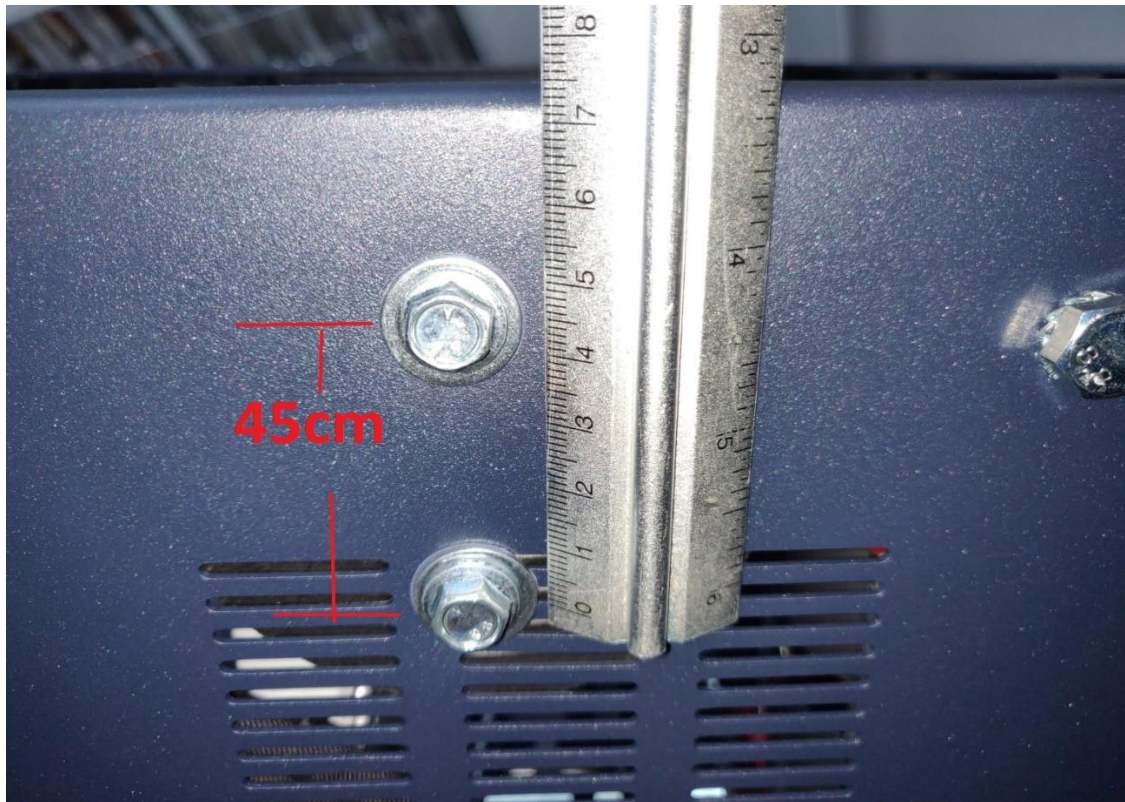


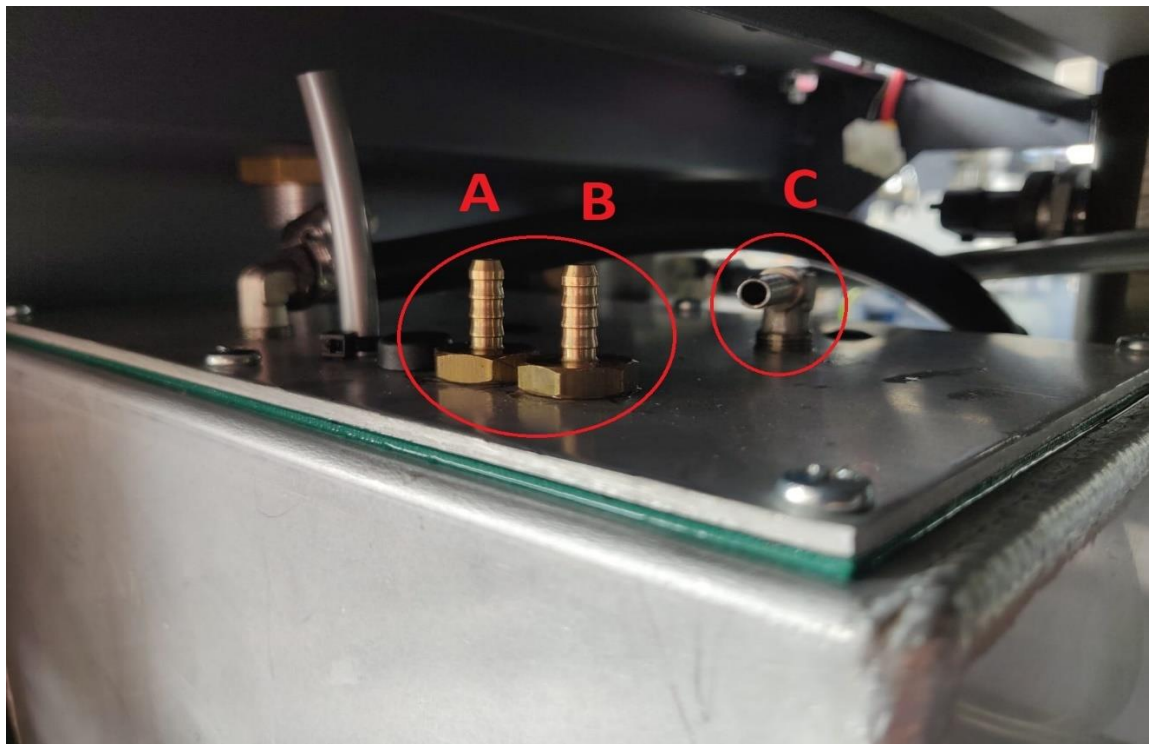
STEP.7 Make two holes to install the measure sensor.



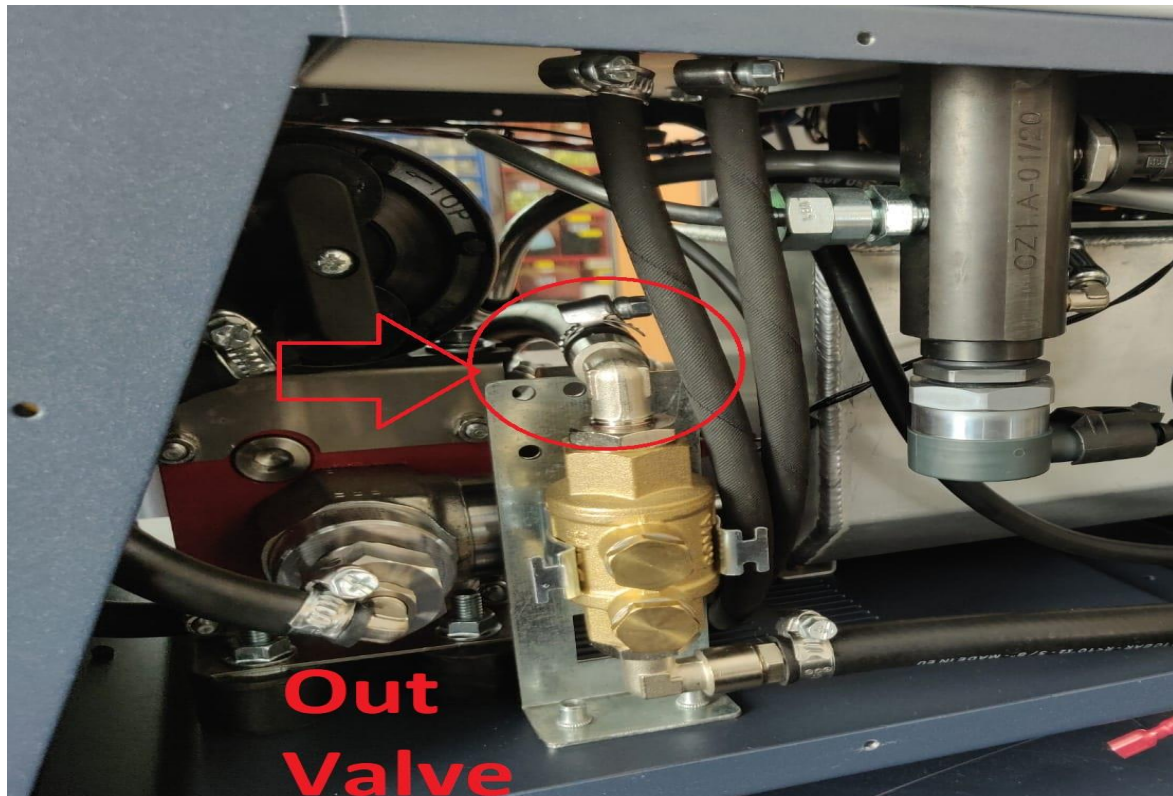


STEP.8 Check the position Sensor Measure and tired with 10Nm.

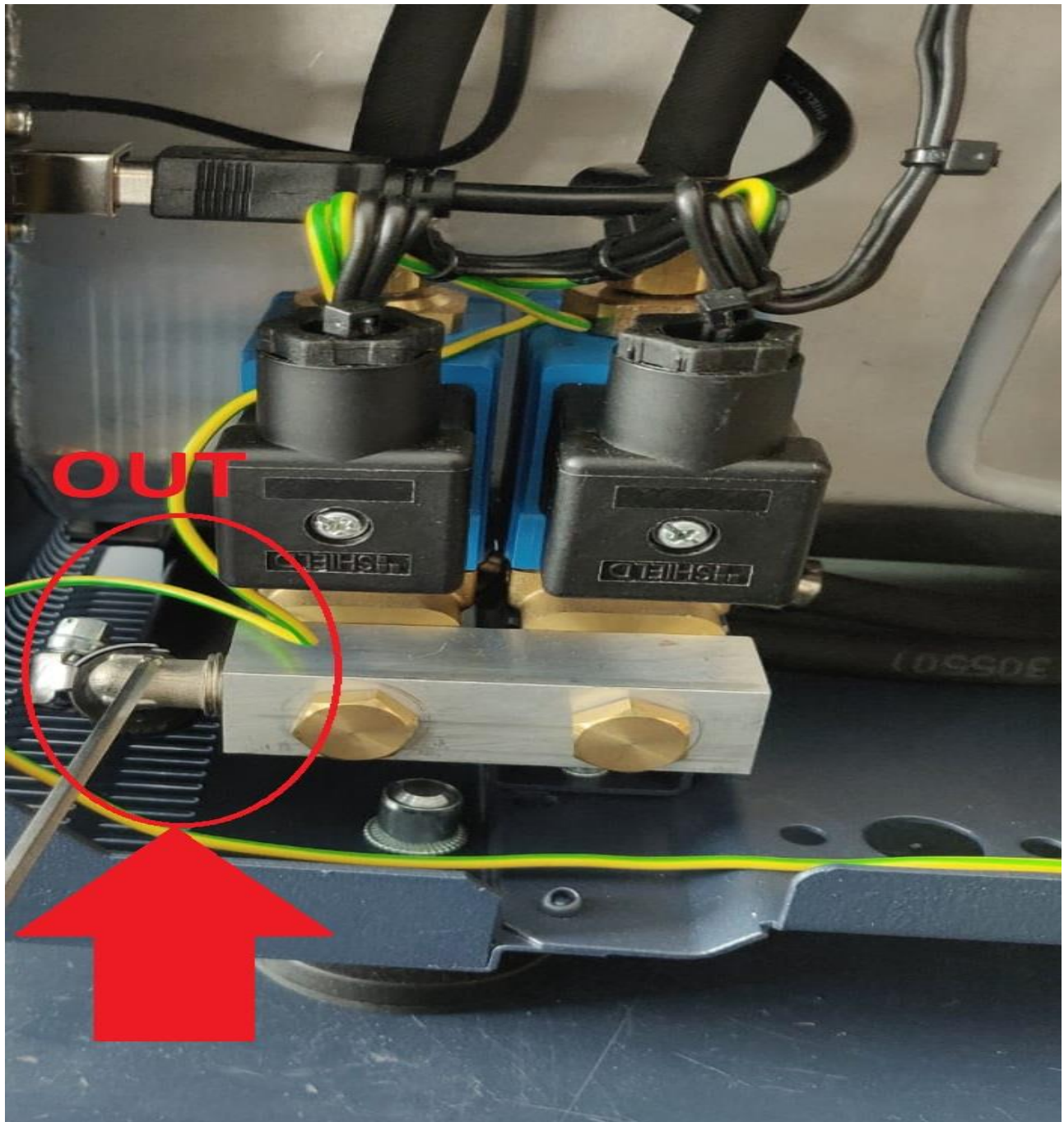


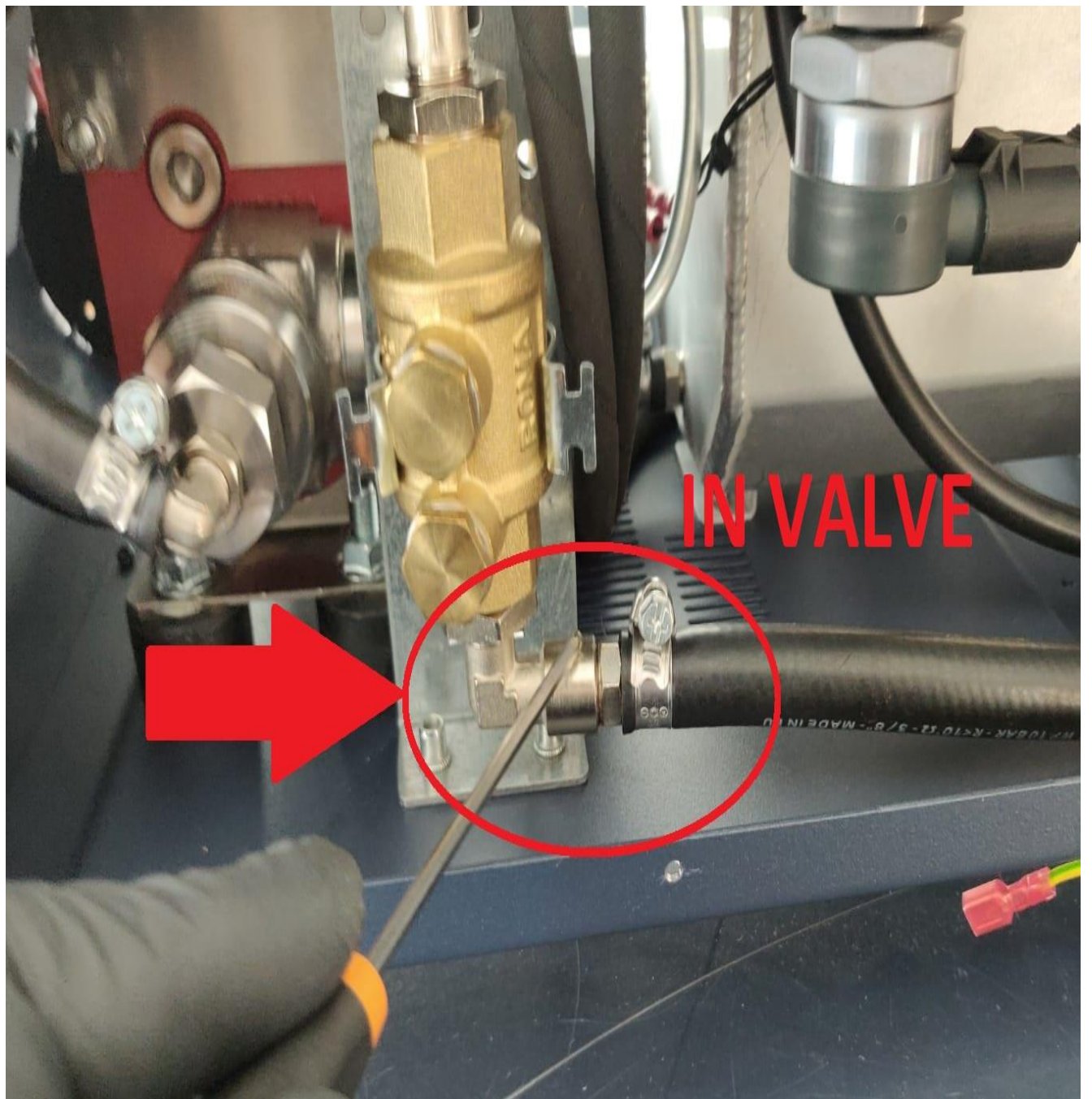


STEP.10 Connect the hose from the OUT valve to IN sensor measure.

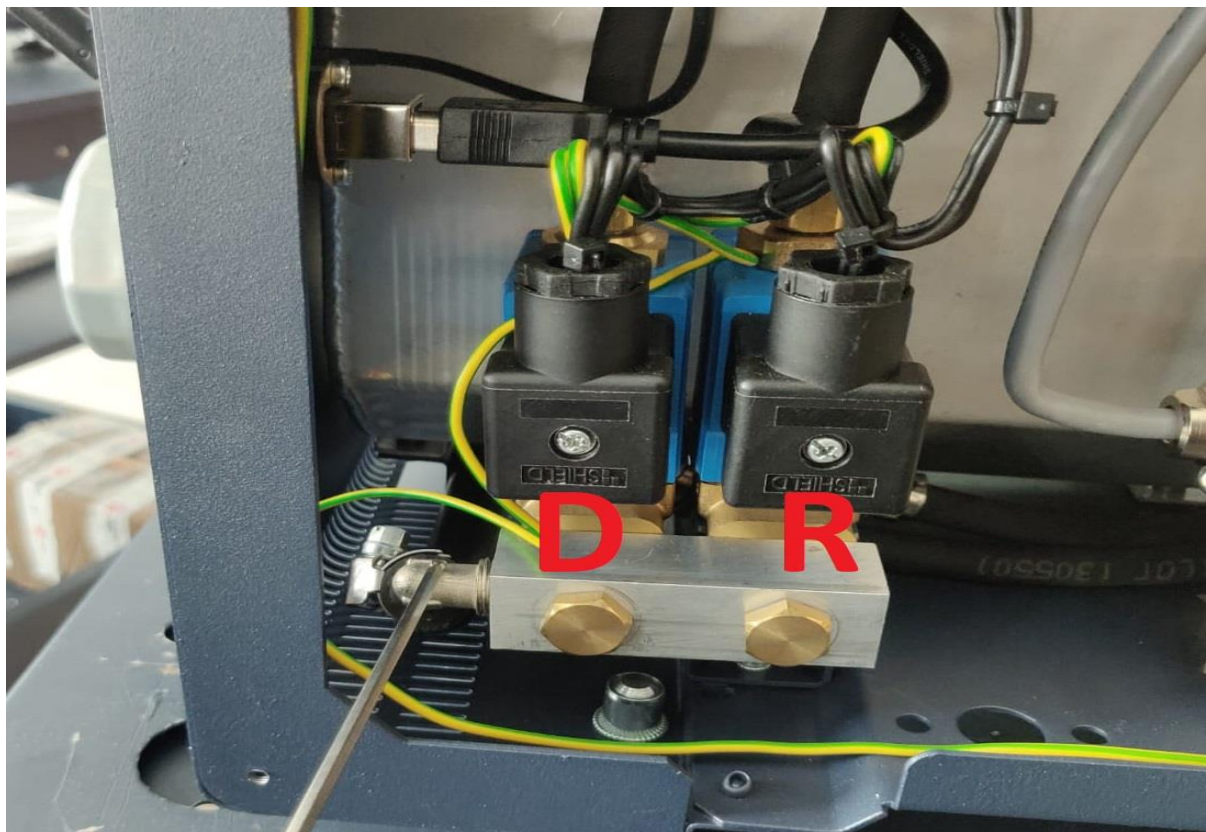
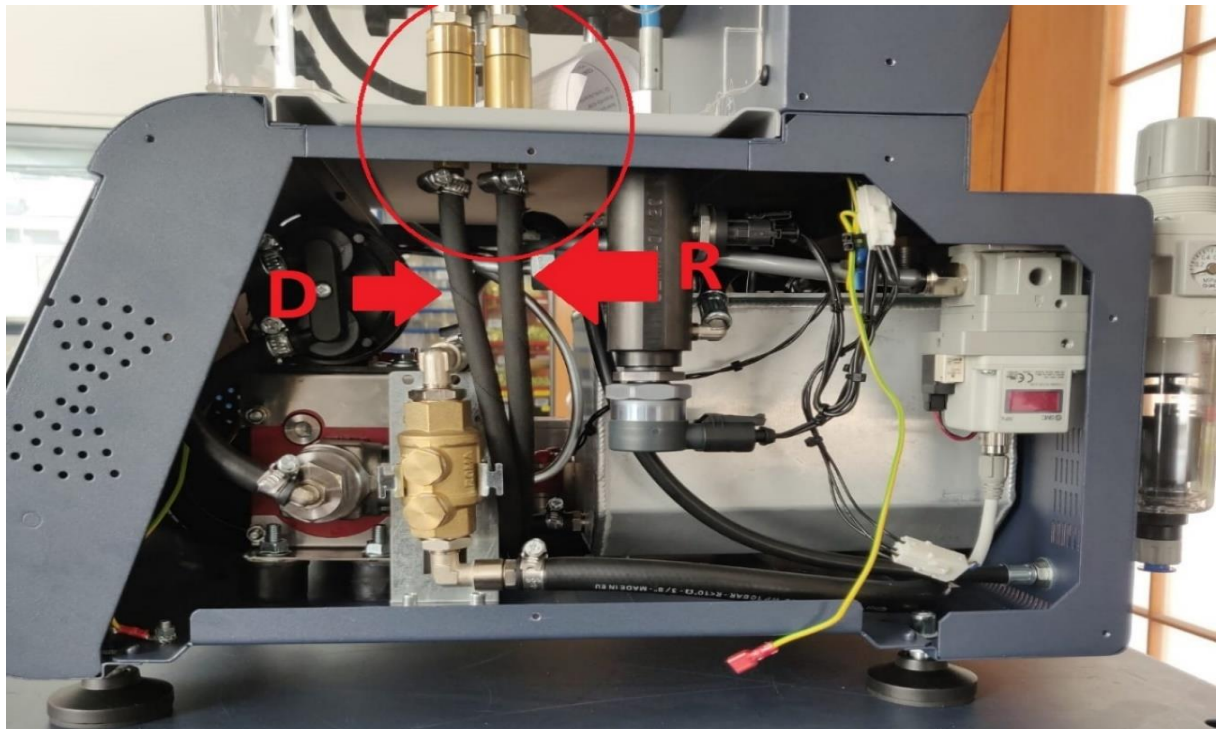


STEP.11 Connect the hose OUT Block electro valve to IN valve.

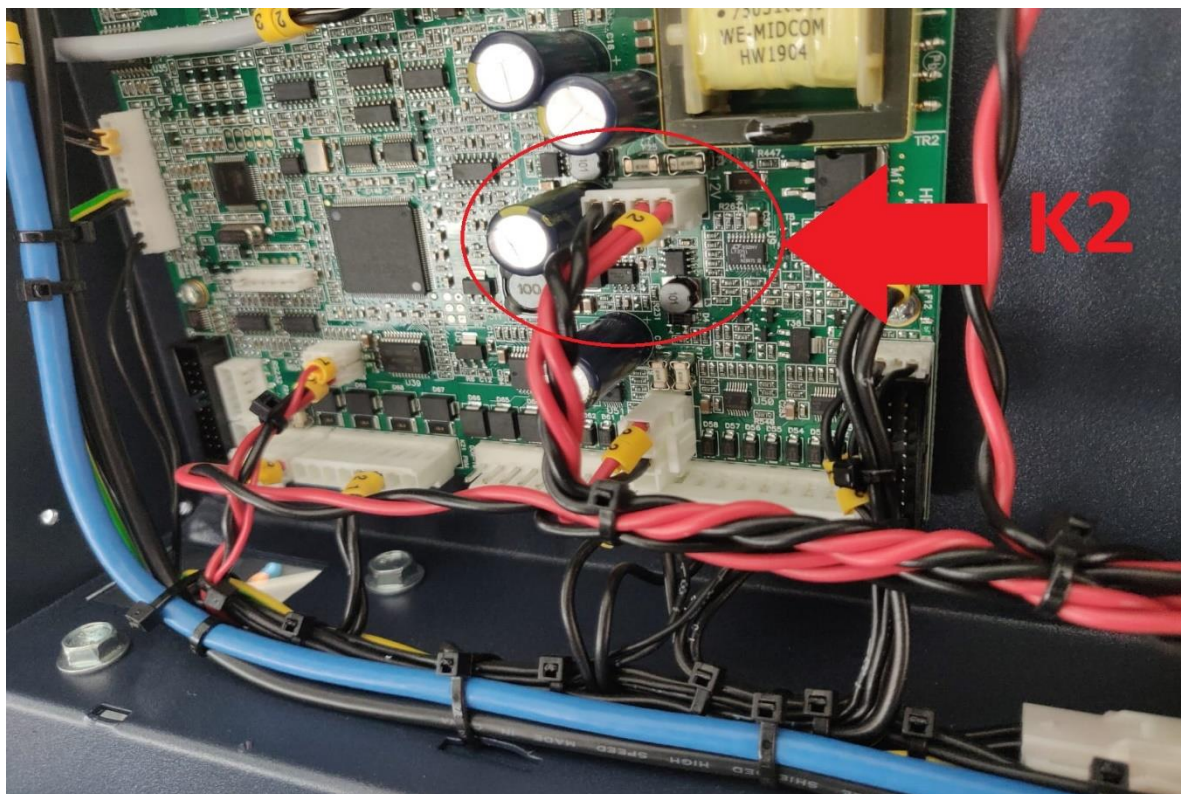
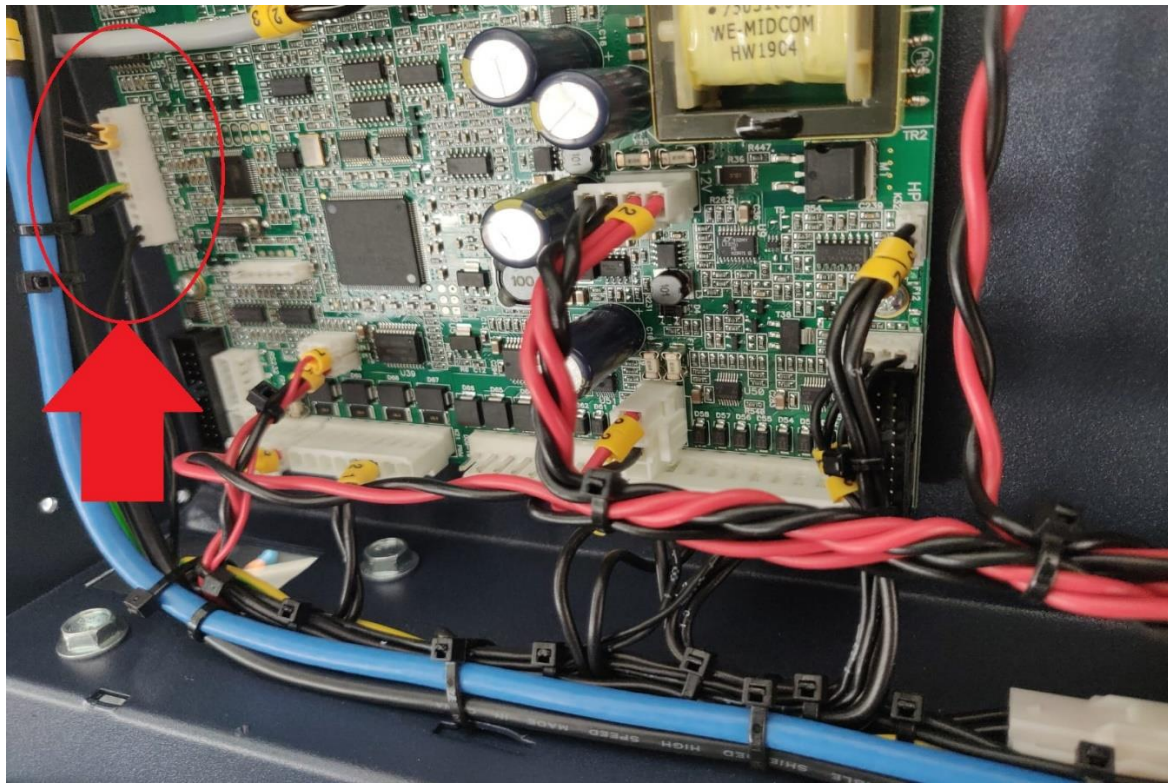




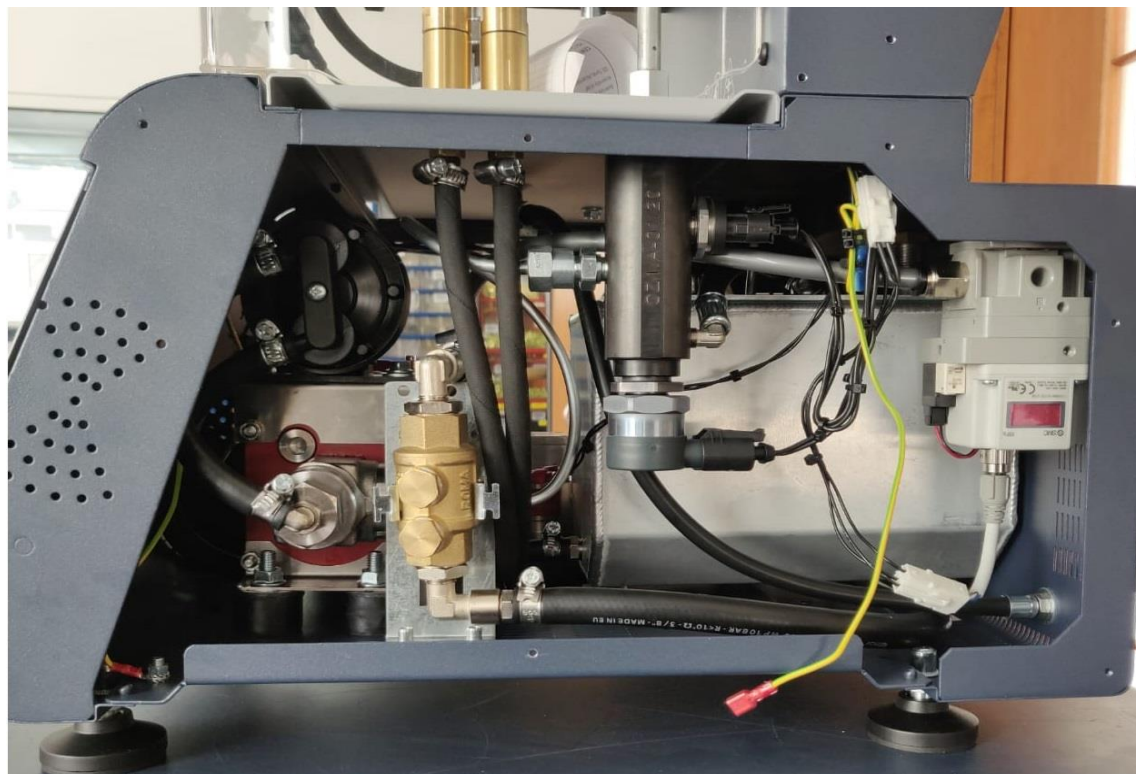
STEP.12 Connect the hose D and R port.



STEP.13 Connect the cable to power supply and the new K2 / K8 cable.



STEP.14 Check all New parts like the picture is the correct position assembly.

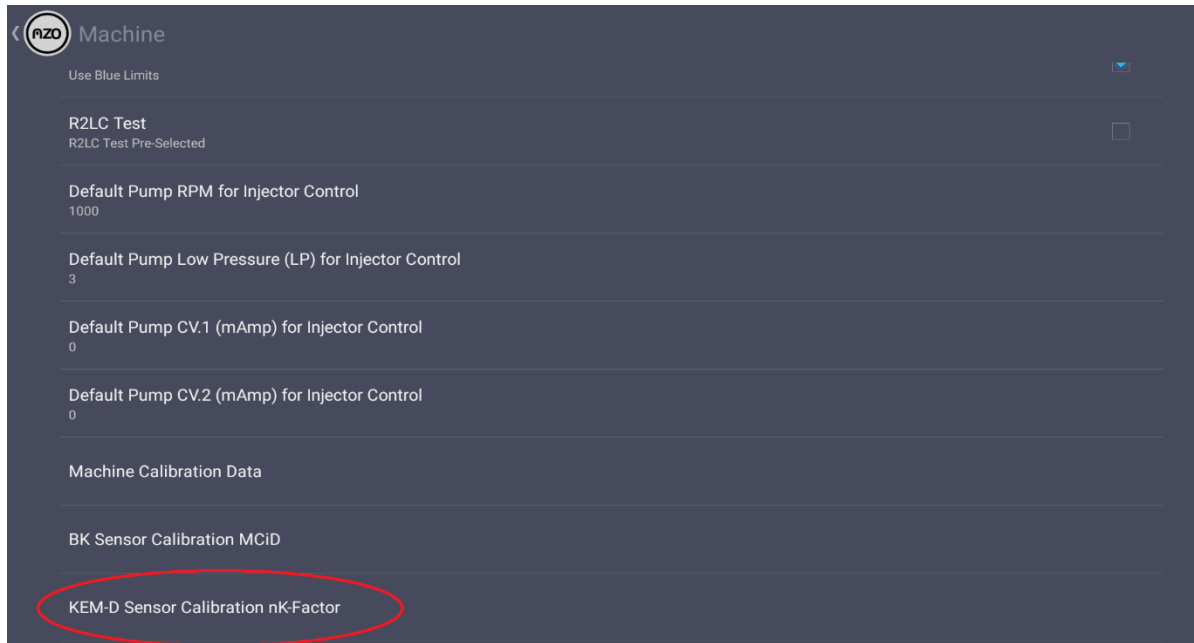


STEP.15 In the machine tab select “KEM-D Sensor Calibration nK-Factor”
you found on the sticker new sensor

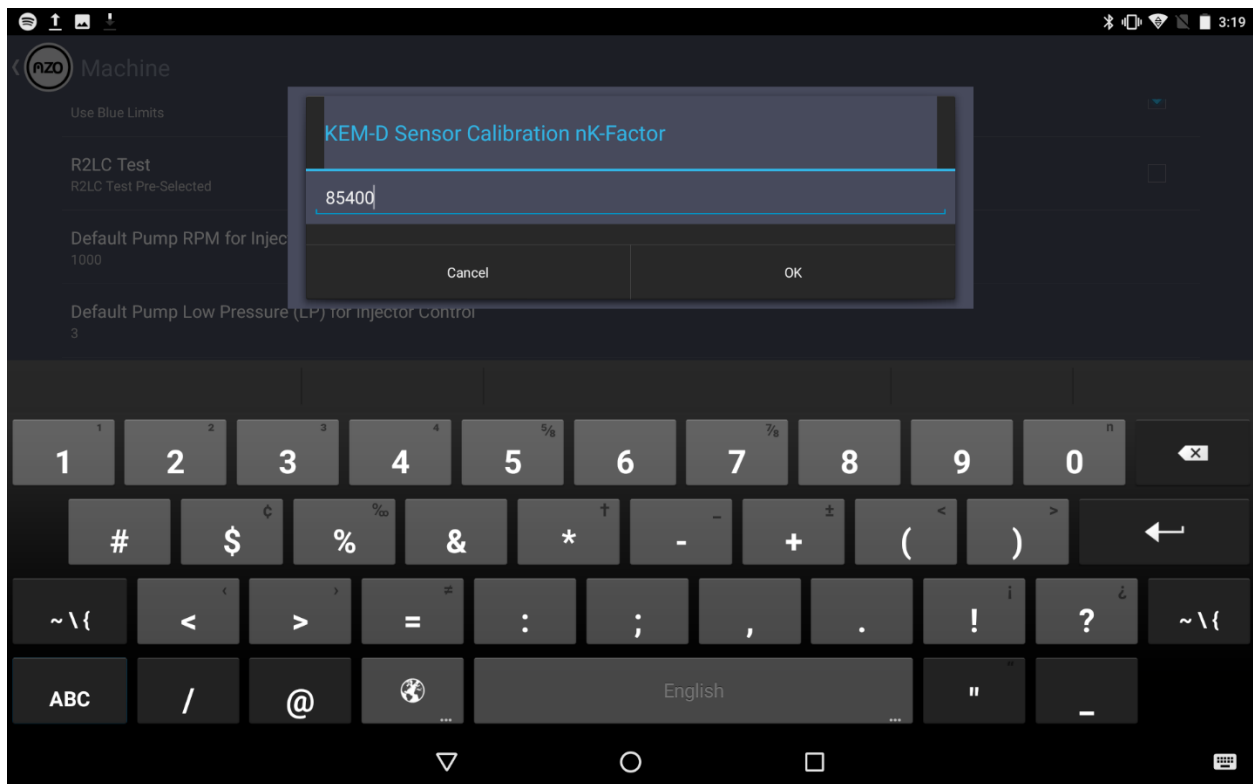


A. Log in as service. (Username: service – Password: 12345)

B. And press 3 dots > Settings > Machine > Kem-D Sensor Calibration nK-Factor.

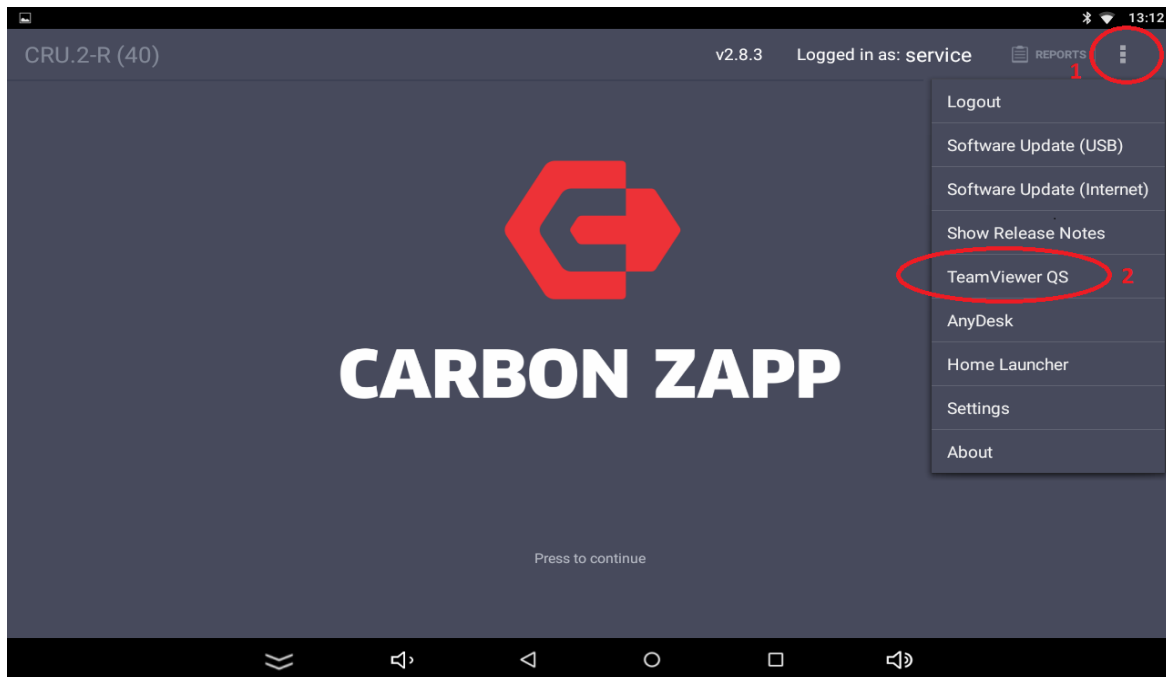


A. Write the number you see on the sensor sticker Step 15.

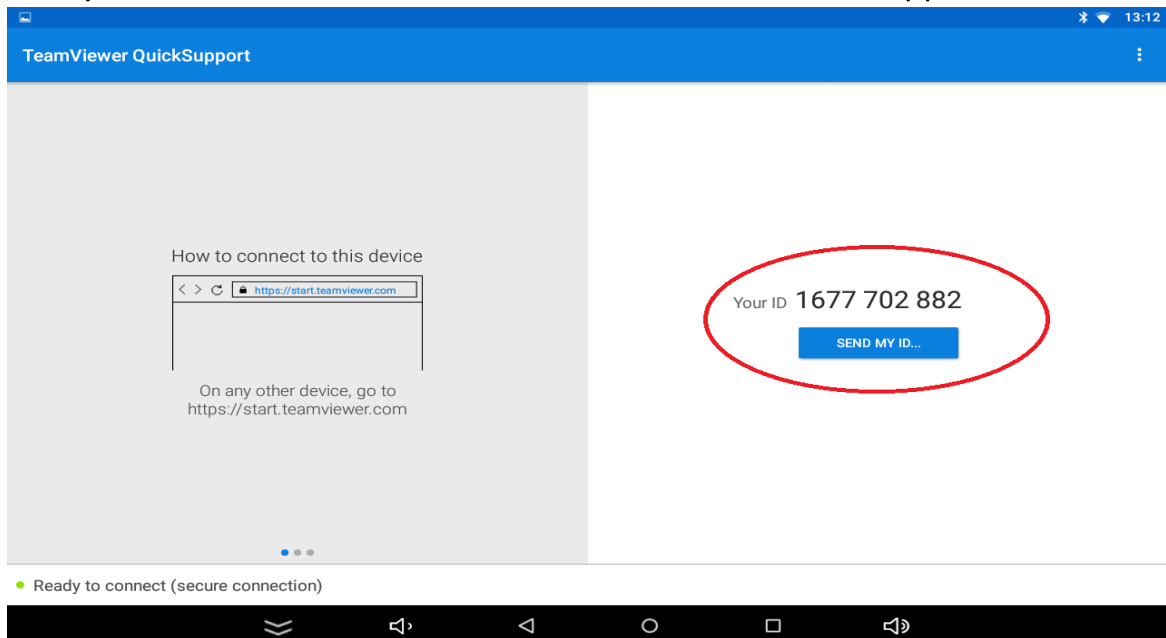


Open the TeamViewer QS send us the ID via email support@carbonzapp.com to change the program.

A. Press 3 dots and next TeamViewer QS.



B. If you are not connected to the Internet, the ID will not appear!



**Main Offices & Production Plant**

364 Varis-Koropiou Ave. Koropi
194 42 Athens, Greece

Headquarters

A.I.S. GmbH
75438 Knittlingen, Germany

email contact@carbonzapp.com

tel +30 210 9856110

fax +30 210 9928655

Support / Sales Telephone

+30 210 98 56110

Support email

support@carbonzapp.com

TeamViewer email

tv@carbonzapp.com

Sales email

office@carbonzapp.com

carbonzapp.com

